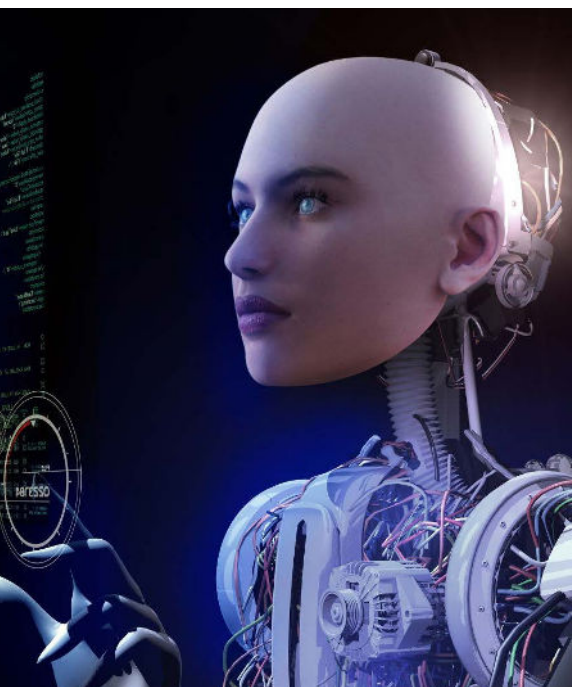


MSc DATA SCIENCE & ARTIFICIAL INTELLIGENCE



STUDY MODE

Full Time

DURATION

1 Year

TUITION FEES (GBP)

9,500

ENTRY REQUIREMENTS

- An undergraduate degree with at least 2:2; or
- Any other relevant qualifications.

AWARDING INSTITUTION

University of Suffolk (UK)

APPLICATION

Complete and submit the application form online.

Once your application is processed and you are offered a seat on the programme, a deposit of GBP 100 must be paid to secure your seat.

PAYMENTS

Payments can only be made by bank transfer or credit card (a link will be sent for payments by credit card).

The MSc Data Science and Artificial Intelligence is a postgraduate taught degree. It is also a conversion course which is designed for students who do not have a computing undergraduate degree but who want to become experts in the field of artificial intelligence and data science. Graduates of this degree are likely to take up roles in industry and commerce as data scientists but could also progress to undertake PhD degrees perhaps using data science and AI in combination with the domain of their original undergraduate subject.

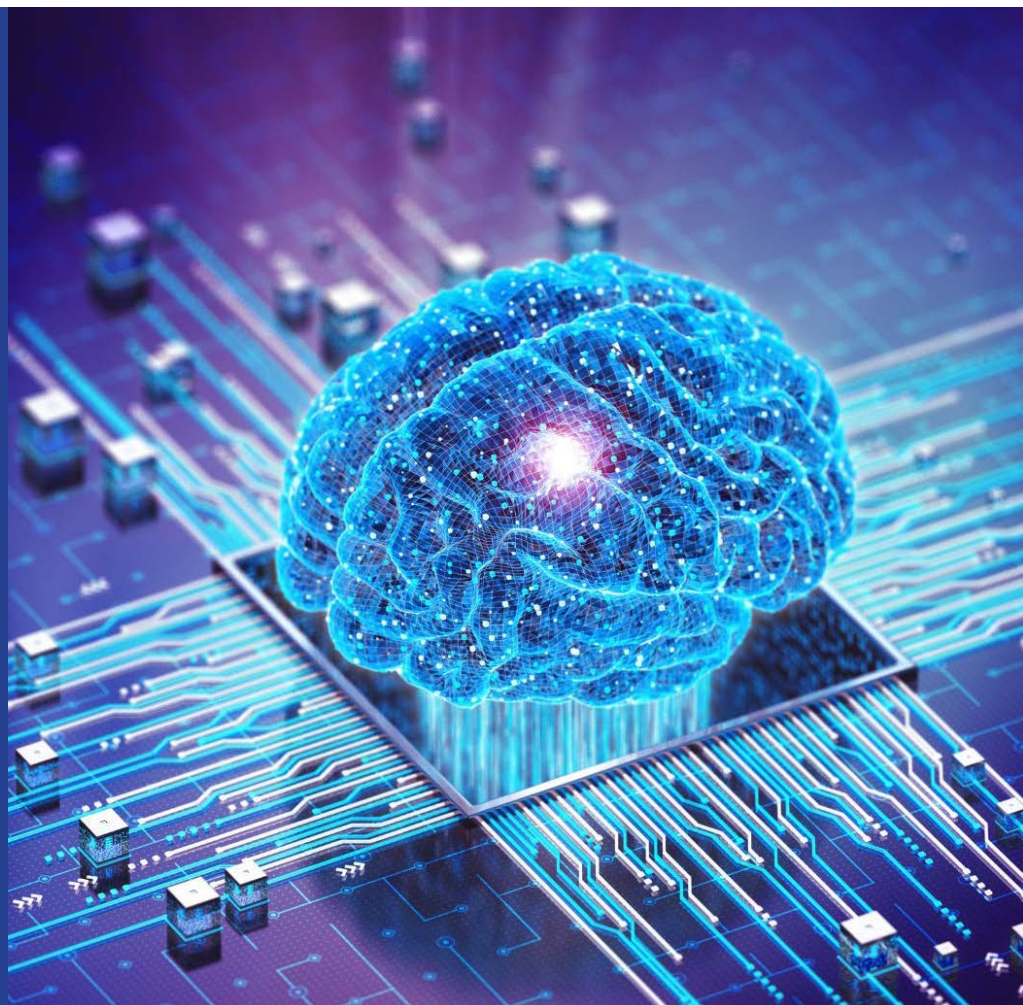
Learning Outcomes

1. Evaluate the technical dimensions of AI and data science architectures, solutions and techniques.
2. Demonstrate deep knowledge and systematic understanding of Artificial Intelligence and Data Science theory, techniques, tools and applications as informed by research and practice at the forefront of the discipline.
3. Combine theory, research and practice at the forefront of the discipline and use it to guide robust and high-quality practical programming and computational solutions and architectures.
4. Understand the ethical and privacy dimensions of Artificial Intelligence and Data Science
5. Critically review literature, software and systems.
6. Possess system-level competencies in assessing, understanding, creating and improving AI and data science solutions and architectures.
7. Possess translational skills to communicate solutions and insights to technical and non-technical audiences.
8. Recognise and respond to opportunities for innovation.
9. Set goals and identify resources for lifelong learning.

Course Structure

Modules

- Introduction to Artificial Intelligence
- Python Programming for AI and Data Science
- SQL and NoSQL Databases
- Cloud Computing for AI and Data Science
- Data Mining and Statistical AI
- Deep Learning Techniques and Tools
- Extended Project



RUSHMORE BUSINESS SCHOOL

RUSHMORE BUSINESS SCHOOL (UK)
10TH FLOOR, OCEAN HOUSE
THE RING
BRACKNELL RG12 1AX
UNITED KINGDOM

 + 44 (0) 808 2349874

 registry@rushmorebusinessschool.co.uk

 www.rushmorebusinessschool.co.uk